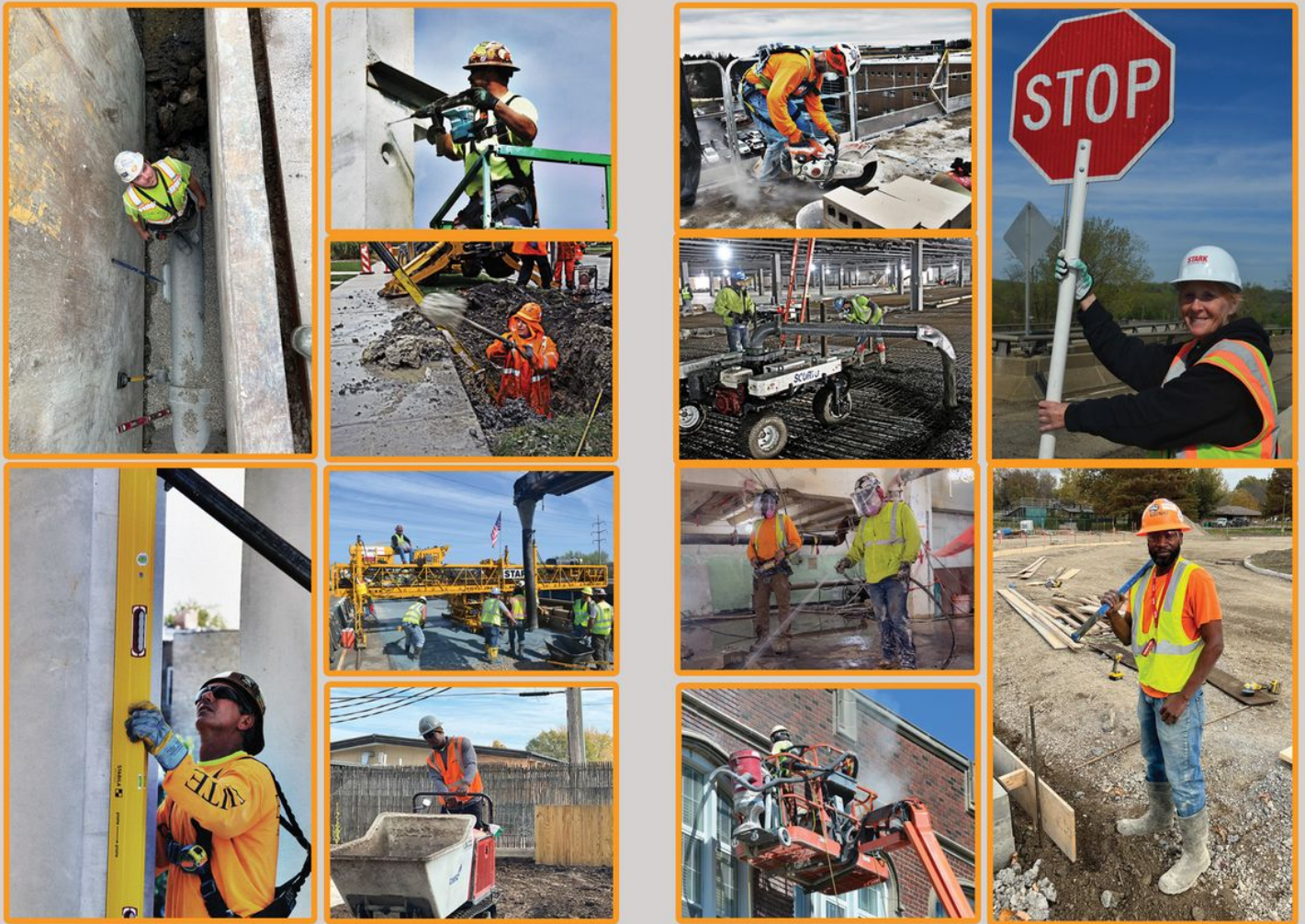




Great Plains Laborers' District Council

Feel the Power



If you are looking for someone to help you navigate and be successful in selecting a contractor, contact GPLECET and see how we can help you.

Dane Simpson
309.692.8750

www.GreatPlainsLECET.org

Laborers Local 231 (Pekin & Quincy)

2503 Broadway • Pekin, IL 61554

309-347-7106 • Fax 309-347-7116

Steve Schroeder, Business Manager

General Contractor CAD CONSTRUCTION

508 E PEARL
TREMONT IL 61568
309-208-0450

CORE CONSTRUCTION

601 SW WATER ST
PEORIA IL 61602
309-404-4700

FRANK MILLARD & CO

107 VALLEY ST.
BURLINGTON IA 52601
319-752-4571

GIVSCO CONSTRUCTION

2323 LAKESHORE DR
PEKIN IL 61554
309-620-9127

HEIN CONSTRUCTION CO

9130 N. INDUSTRIAL RD
PEORIA IL 61615
309-691-4774

K.E VAS CO

P.O. BOX 190
JACKSONVILLE IL 62651
217-245-9617

KORTE & LUITJOHAN CON- STRUCTION

12052 HIGHLAND RD
HIGHLAND IL 62249
618-654-9877

KEELEY CONSTRUCTION

500 S. EWING AVE
ST. LOUIS MO
314-421-5933

LAVERDIERE CONSTRUCTION

4055 W. JACKSON ST
MACOMB IL 61455
309-837-1258

LEANDER CONSTRUCTION

24472 N COUNTY HWY 6
CANTON IL 61520
309-647-7400

MASSMAN CONSTRUCTION

12412 ROTT RD
ST. LOUIS MO 63127
314-821-0042

P.J. HOERR INC

107 N. COMMERCE PL
PEORIA IL 61604
309-688-9567

O'SHEA BUILDERS

3401 CONSTITUTION DR
SPRINGFIELD IL 62711
217-522-2826

PLOCHER CONSTRUCTION CO

2808 THOLE-PLOCHER RD
HIGHLAND IL 62249
618-654-9408

POETTKER CONSTRUCTION CO

380 S. GERMANTOWN RD
BREESE IL 62230
618-526-3316

RIVER CITY CONSTRUCTION

101 HOFFER LANE
EAST PEORIA IL 61611
309-694-3120

SM WILSON

2185 HAMPTON AVE
ST. LOUIS MO 63139
314-645-9595

SAGAMO CONSTRUCTION

2100 EAST MOFFAT AVE
SPRINGFIELD IL 62702
217-544-9871

WATERKOTTE CONSTRUC- TION

PO BOX 3586
QUINCY IL 62301
217-222-5413

WILLIAMS BROTHERS CONST

1200 EAST KELLY AVE
PEORIA HEIGHTS IL 61616
309-688-0416

Heavy-Highway

ADVANCED ASPHALT CO

PO BOX 234
PRINCETON IL 61356
815-872-9911

BENIACH CONSTRUCTION CO

409 MISSOURI ST.
HINDSBORO IL 61930
217-253-6100

CLEVENGER CONTRACTORS

PO BOX 19
BLUFFS IL 62621
217-754-3411

COLLINS & HERMANN

2280 S. PARK AVE
STREAMWOOD IL 60107
630-372-1410

COUNTY CONTRACTORS

1228 E. 1350TH ST
QUINCY IL 62305
217-885-3550

FREESIN INC

PO BOX 13420
SPRINGFIELD IL 62791
217-546-6192

GUNTHER CONSTRUCTION

P.O. BOX 1488
GALESBURG IL 61402
309-342-4155

HALVERSON CONSTRUCTION

620 N 19TH
SPRINGFIELD IL 62702
217-753-0027

PHOENIX CORPORATION

PO BOX 445
RAPIDS CITY IL
309-523-3687

REES CONSTRUCTION

PO BOX 646
QUINCY IL 62306
217-222-0748

SCHOMBURG & SCHOMBURG

923 N COLLETT ST
DANVILLE IL 61832
217-442-3002

STARK EXCAVATING

1805 W. WASHINGTON ST
BLOOMINGTON IL 61701
309-828-5034

UNITED CONTRACTORS MID- WEST UCM

3151 ROBBINS RD
SPRINGFIELD IL 62791
217-546-6192

Concrete Masonry

AUPPERLE AND SONS

190 E WASHINGTON ST
MORTON IL 61550
309-266-7460

BEER BROTHERS

110 N. WHITE ST
LEROY IL 61752
309-445-1623

BLACKHAWK FOUNDATION

PO BOX 29
GENESEO IL 61254
309-944-4641

JJ BRAKER & SONS

1054 W. JEFFERSON
MORTON IL 61550
309-266-6447

C&G CONCRETE CONST

1906 MEADOWS AVE
EAST PEORIA IL 61611
309-699-0384

COBRA CONCRETE CUTTING

410 E LAYFAYETTE ST
BLOOMINGTON IL 61701
309-585-4997

FENIX CONSTRUCTION CO

4655 LEMAY FERRY RD
ST. LOUIS MO 63129
314-892-4700

G.M. SIPES CONSTRUCTION

P.O. BOX 109
RUSHVILLE IL 62681
217-322-6543

ILLINOIS CIVIL CONTRACTORS

420 PINECREST DR
EAST PEORIA IL 61611
309-694-4224

KINNEY CONTRACTORS

19342 E. FRONTAGE RD
RAYMOND IL 62560
217-229-3322

KNAPP CONCRETE CONTRAC- TORS

150 E. MARTIN
GOODFIELD IL 61742
309-448-2218

M&M CONCRETE

10092 E. GOLF RD
STOCKTON IL 61085
815-947-2178

MERC CONSTRUCTION

10088 MODENA RD
WYOMING IL 61491
309-693-3338

M.R. MASON CONTRACTORS

P.O. BOX 1428
PEORIA IL 61602
309-698-0035

OTTO BAUM CO INC

866 N. MAIN ST.
MORTON IL 61550
309-266-7114

RUPP MASONRY

1501 N 18TH
QUINCY IL 62301
217-223-3259

SEWARD MASONRY INC

812 PARK STREET
TAYLOR SPRINGS IL 62089
217-532-3213

SUMMIT MASONRY & STONE WORKS

107 COMMERCE PLACE
PEORIA IL 61604
309-688-9567

Asphalt

AMERICAN ASPHALT

2328 E. LINCOLN HWY
NEW LENOX IL
708-669-3393

CITY COAL & ASPHALT

225 N. 2ND STREET
PEKIN IL 61554
309-346-0564

COMPLETE ASPHALT SERVICE

1601 KAMAR DRIVE
PITTSFIELD IL 62363
217-285-6099

DIAMOND CONSTRUCTION CO

2000 N 18TH ST
QUINCY IL 62305
217-222-3532

DUNN COMPANY
724 N MERCER
DECATUR IL 62522
217-429-4444

FREEHILL ASPHALT
103 YOUTH AVE
WATSEKA IL 60970
815-432-5438

ILLINOIS VALLEY PAVING
PO BOX 13490
SPRINGFIELD IL 62791
217-546-6192

MICRO SURFACING
P.O. BOX 116
PEORIA IL 61650
309-694-3686

R.A. CULLINAN & SONS
PO BOX 166
TREMONT IL 61568
309-925-2721

RABINE PAVING
900 NATIONAL PKWY
260 SHAUMBURG IL 61832
888-722-4633

ROWE CONSTRUCTION
PO BOX 609
BLOOMINGTON IL 61701
309-827-0091

TAZEVELL COUNTY ASPHALT
23497 RIDGE ROAD
EAST PEORIA IL 61611
309-698-8404

W.L. MILLER CO
750 EAST COUNTY RD 1220
HAMILTON IL 62341
217-847-3316

WESTERN ASPHALT
2665 PRAIRIE COLLEGE RD
JACKSONVILLE IL 62650
217-243-3822

Demolition
BRANDENBURG INDUSTRIAL SERV
2625 S. LOOMIS ST
CHICAGO IL 60608
312-528-1128

HAYDEN WRECKING CO.
4201 ST. CLAIR AVE
WASHINGTON PARK IL 62203
618-874-8318

HOOD EXCAVATING & DEMO
11N CONGRESS ST.
RUSHVILLE IL 62681
217-322-2084

JIMAX CORP
3545 JIMAX WAY
PEORIA IL 61605
309-363-2284

N.E FINCH
PO BOX 5187
PEORIA IL 61601
309-671-1433

RIVER CITY DEMO
PO BOX 726
PEORIA IL 61607
309-673-8938

SPIRTS WRECKING CO
951 SKINKER PARKWAY
ST. LOUIS MO 63112
314-862-9800

Excavation
BLOOMSDALE EXCAVATING
12211 STATE ROUTE Y
BLOOMSDALE MO 63627
573-483-2564

FISCHER EXCAVATING
1567 HEINE ROAD
FREEPORT IL 61032
815-233-3232

GELLY EXCAVATING & CONSTRUCTION
13297 PLOCHER WAY
HIGHLAND IL 62249
618-654-3917

HOOD EXCAVATING & DEMO
11N CONGRESS ST.
RUSHVILLE IL 62681
217-322-2084

N.E FINCH
PO BOX 5187
PEORIA IL 61601
309-671-1433

MILLER & SONS CONSTRUCTION
PO BOX 289
MACKINAW IL 61755
309-359-8066

STUTZ EXCAVATING
3837 FOSTERBURG RD
ALTON IL 62002
618-259-2485

WALKER EXCAVATING CO INC
3222 W. FARMINGTON RD
PEORIA IL 61604
309-671-6617

Light Commercial
ALLIED CONSTRUCTION
2300 SW ADAMS
PEORIA IL 61602
309-673-3233

HELMKAMP CONSTRUCTION CO
707 BERKSHIRE BLVD
EAST ALTON IL 62024
618-251-2600

JOHNCO CONSTRUCTION CO
107 W. 1ST ST.
MACKINAW IL 61755
309-359-3000

KEMPER CONSTRUCTION
P.O. BOX 492
CANTON IL 61520
309-245-9617

MID ILLINOIS COMPANIES
905 NE ADAMS
PEORIA IL 61603
309-674-0717

PEORIA METRO CONSTRUCTION
PO BOX 5187
PEORIA IL 61601
309-671-1466

R-S CONSTRUCTION
PO BOX 446
SPARTA IL 62238
618-534-4061

THORTON RAVE CONSTRUCTION
929 E. COROVE UNIT A
BLOOMINGTON IL 61701
309-585-2376

WRIGHT-WAY INTERIOR SYSTEMS
72 EICHHORN RD
SPRING BAY IL 61611
309-822-0815

Landscaping
CENTRAL LANDSCAPING
12507 MENDELL RD
PRINCEVILLE IL 61559
309-385-4832

CJL LANDSCAPING
10902 W. US HIGHWAY 150
BRIMFIELD IL 61517
309-691-9200

EARTH CARE UNLIMITED
3108 PANTHER GROVE
ASHLAND IL 62612
217-452-7370

F&W LAWN CARE
2405 E EMPIRE ST
BLOOMINGTON IL 61704
309-664-2666

ILLINOIS FOREST PRODUCTS
8699 ARENZVILLE RD
BEARDSTOWN IL 62618
217-323-4540

PENN LANDSCAPING
2507 S. MAIN ST
BLOOMINGTON IL 61704
309-663-5513

MIDWEST SEEDLING
534 SPUNKY RIDGE RD
MEREDOSIA IL 62665
217-584-1125

MAYER LANDSCAPING
3670 HIGH PRAIRIE SCHOOL RD
BELLEVILLE IL 62220
618-277-4280

Piping
DRIES BROTHERS PLUMBING
5001 N RENWOOD AVE
PEORIA IL 61614
309-691-4535

G.A. RICH & SONS
P.O. BOX 50
DEER CREEK IL 61733
309-447-6231

HAYES MECHANICAL
2160 N. ASHLAND AVE
CHICAGO IL 60614
773-342-0000

HOERR CONSTRUCTION
PO BOX 10195
PEORIA IL 61612
309-691-6653

J.C. DILLON PLUMBING
1515 W. LUTHY DR
PEORIA IL 61615
309-689-1596

PETERSBURG PLUMBING CO.
PO BOX 440
PETERSBURG IL 62675
217-321-0036

PIPCO
1409 W. ALTORFER DR
PEORIA IL 61603
309-692-4060

TOBIN BROS PLUMBING
2010 NE PERRY
PEORIA IL 61603
309-685-7641

TRI COUNTY IRRIGATION
PO BOX 290
GOODFIELD IL
309-965-2057

Traffic Control
ACCESS CONTROL
511 44TH ST
ROCK ISLAND IL 61201
309-786-0220

JD TRAFFIC
7327 N. GALENA RD
PEORIA IL 61615
309-966-4494

RIGHT WAY TRAFFIC CONTROL
2961 BEST WAY
BELLEVILLE IL 62226
618-410-0251

ROAD SAFE TRAFFIC
670 HIGHPOINT LANE
EAST PEORIA IL 61611
309-699-2205

Asbestos
BROCK INDUSTRIAL
309 MECHANIC ST
PEKIN IL 61554
309-353-6145

M&O INSULATION CO.
1625 W. ALTORFER DR
PEORIA IL 61615
309-692-6700

SPRINKMAN INSULATION
1028 SW WASHINGTON
PEORIA IL 61602
309-674-5112

Fencing
HOHULIN BROS FENCE CO
PO BOX 107
GOODFIELD IL 61742
309-965-2241

I&I CONSTRUCTION
21050 BRADY ST
DAVENPORT IA 52804
319-386-1014

MIDWEST FENCE COMPANY
900 N KEDZIE
CHICAGO IL 60651
773-722-6616

Miscellaneous

BRYNE & JONES MARINE
PO BOX 1207
TREMONT IL 61568
314-567-7997
RIVER WORK

EAGLE SERVICES CORP
1111 N. MAIN ST
CREVE COEUR IL 61610
309-694-1111
HYDRO VAC

ERA VADILIVIA CONTRACTORS
2918 EAST 95TH ST
CHICAGO IL 60017
773-721-9350
BRIDGE PAINTING

FOLTZ WELDING
501 E. CLINTON AVE
PATOKA IL 62875
618-432-7777
WELDING

ILLINI DRILLED FOUNDATIONS
PO BOX 1351
DANVILLE IL 61834
217-442-8765
FOUNDATIONS

INDEPENDENT MECHANICAL SERV
4155 N. KNOX AVE
CHICAGO IL 60641
773-282-4500
MISC.

J.F. BRENNAN
2551DUKANE DR #A2
ST. CHARLES IL 60174
630-443-8868
MISC.

P&P CONSTRUCTION CO
1132 E. LINCOLN ST.
RIVERTON IL 62561
217-629-8544

SCHECK INDUSTRIES
ONE EAST OAK HILL DR #100
WESTMONT IL 60559
708-482-8100

QUINCY AREA
ALBERICI CONSTRUCTORS INC
8800 PAGE AVE
ST. LOUIS MO 63114
314-733-2000
GENERAL CONTRACTOR

BROCK INDUSTRIAL SERVICES LLC
309 MECHANIC ST.
PEKIN IL 61554
309-353-6145
ASBESTOS

CLEVENGER CONSTRUCTORS
PO BOX 19
BLUFFS IL 62621
217-754-3411
HEAVY HIGHWAY

COUNTY CONTRACTORS
8111 HIGHWAY 24 E
FOWLER IL 62338
217-434-9133
HEAVY HIGHWAY

DIAMOND CONSTRUCTION
2000 N 18TH
QUINCY IL 62301
217-222-2848
ASPHALT

MARK EDLIN DOZING
PO BOX 128
MT. STERLING IL 62353
217-773-4392
EXCAVATING

ILLINOIS VALLEY PAVING
PO BOX 248
WINCHESTER IL 62694
217-742-3103
HEAVY HIGHWAY

MD MAGARY CONSTRUCTION CO
5550 N BROADWAY
ST. LOUIS MO 63147
314-771-1400
HEAVY HIGHWAY

MARSCHEL WRECKING
1601 LARKIN WILLIAMS RD
FENTON MO 63147
636-326-4940
DEMOLITION

DAVID MASON & ASSOCIATES
800 S. VANDEVENTER
ST. LOUIS MO 63110
314-534-1030

MCGRATH & ASSOCIATES
1920 S KINGS HIGHWAY
ST. LOUIS MO 62110
314-772-7600

REES CONSTRUCTION
517 KENTUCKY
QUINCY IL 62301
217-222-0748
HEAVY HIGHWAY

RUPP MASONRY
15401 N. 186TH ST.
QUINCY IL 62301
217-223-3259
BRICK MASONRY

T&M CONSTRUCTION
1582 850 N AVE
MT. STERLING IL 62353
217-491-8855

LAVERDIERE CONSTRUCTION INC
4055 W. JACKSON ST
MACOMB IL 61455
309-837-1258
GENERAL CONTRACTOR