

4509 N Catalina Dr · Peoria, IL 61615  
309-688-3653 · FAX 309-688-0749

Tim Schmidgall, Bus. Mgr.

**GENERAL CONTRACTORS:**

**AFE Construction MBE**  
PO Box 10331, Peoria, IL 61612  
309-208-3092

**Otto Baum & Sons**  
866 N. Main  
Morton, IL 61550 309-266-7114

**CORE Construction**  
866 N. Main Morton, IL 61550  
309-266-9542

**Givisco Construction Co MBE**  
2321 Lakeshore Dr.  
Pekin, IL 61554 309-620-9127

**P. J. Hoerr, Inc.**  
107 N Commerce Pl.  
Peoria, IL 61604 309-688-9567

**JM Industrial Supply Inc. MBE**  
2323 Lakeshore Dr.  
Pekin, IL 61554 309-346-5796

**Peoria Metro Construction**  
P.O. Box 5187 Peoria, IL 61601  
309-671-1466

**River City Construction Co.**  
101 Hoffer Lane  
E Peoria, IL 61611 309-694-3120

**Williams Brothers Construction**  
P.O. Box 1366 Peoria, IL 61654  
309-688-0416

**LIGHT COMMERCIAL CONTRACTORS:**

**Bishop Brothers, Inc.**  
PO Box 3854, 2800 Alta Ln  
Peoria, IL 61612 309-691-9313

**First Build Associates**  
410 Jubilee Ln.  
Metamora, IL 61548 309-383-4510

**CAD Construction**  
508 E Pearl #A-1  
Tremont, IL 61568 309-244-7664

**Givisco Construction Co MBE**  
2321 Lakeshore Dr.  
Pekin, IL 61554 309-620-9127

**R. H. Green Construction**  
1707 W. Chanute Rd.  
Peoria, IL 61615 309-691-7252

**T. Haefli & Sons, Inc.**  
121 E. Lake St. Peoria, IL 61614  
309-682-9683

**Hein Construction Co., Inc.**  
9130 N. Industrial Rd.  
Peoria, IL 61615 309-691-4774

**Horan Construction**  
1720 W. Chanute Rd.  
Peoria, IL 61615 309-691-3133

**Harold O'Shea Builders**  
3401 Constitution  
Springfield, IL 62711  
217-522-2826

**RJS Enterprises**  
8919 N Pioneer Rd.  
Peoria, IL 61615 309-691-5611

**George H. Rump Constr. Co.**  
PO Box 9815  
3516 W Harmon Hwy 2  
Peoria, IL 61651, 309-637-6114

**Phil Schindler & Sons, Inc.**  
601 McKinley  
Bartonville, IL 61607  
309-697-0780

**Snyder Construction**  
1044 W. Olympia  
Peoria, IL 61615 309-693-0330

**N. Zobrist & Sons, Inc.**  
95 Commerce Dr.  
Morton, IL 61550, 309-263-1230

**CONCRETE-MASONRY CONTRACTORS:**

**Mel Allen Construction, Inc.**  
1841 S. Crest Dr.  
Peoria, IL 61605 309-637-0336

**P.A. Atherton Construction**  
57 Eichhorn Rd.  
Spring Bay, IL 61611  
309-822-8513

**William Aupperle & Sons**  
190 E. Washington  
Morton, IL 61550 309-676-8831

**Otto Baum Company, Inc.**  
866 N. Main Morton, IL 61550  
309-682-2508

**J.J. Braker & Sons, Inc.**  
520 E Highland St.  
Morton, IL 61550 309-266-6447

**C&G Concrete Const WBE**  
1906 Meadows  
E Peoria, IL 61611 309-699-0384

**Cordova Construction MBE**  
2424 N Ellory Road  
Peoria, IL 61615 309-674-8810

**Horowitz Concrete Co. WBE**  
128 Legion Lane  
E Peoria, IL 61611 309-208-4757

**Clifford Kaufmann & Sons**  
Box 5199  
Morton, IL 61550 309-263-2380

**Knapp Concrete Contractors**  
1649 Knapp Dr Box 357  
Congerville, IL 61729  
309-448-2218

**M.R. Mason Contractor, Inc.**  
PO Box 1428  
Peoria, IL 61655 309-698-0035

**Michel Brothers Masonry**  
456 S. Nebraska  
Morton, IL 61550 309-266-9219

**Professional Contracting Svs.**  
26691 N County Highway 19  
Canton, IL 61520  
309-647-9744

**R.H. Remelius Co.**  
528 N Fork Rd.  
Metamora, IL 61548  
309-688-6195

**INTERIOR FINISH AND PLASTERING CONTRACTORS:**

**Allied Construction Service**  
2300 S.W. Adams  
Peoria, IL 61602 309-673-3233

**Associated Interior Const.**  
P.O. Box 1024  
Tremont, IL 61568 309-925-3233

**Givisco Construction Co MBE**  
2321 Lakeshore Dr.  
Pekin, IL 61554 309-620-9127

**Horan Construction**  
1720 W. Chanute  
Peoria, IL 61615 309-691-3133

**Mid-Illinois Paint & Drywall**  
905 N.E. Adams  
Peoria, IL 61603 309-674-0717

**R.G. Const. Services, Inc.**  
125 Thunderbird Lane, #6  
E Peoria, IL 61611 309-282-8500

**Riverside Interiors**  
1207 Lourdes Road, Suite 8  
Metamora, IL 61548 309-383-2444

**SNS Construction Services**  
23776 E Sebree Road  
Canton, IL 61520 309-222-6131

**Wright-Way Interior Systems**  
72 Eichhorn Road  
Spring Bay, IL 61611  
309-822-0815

**DEMOLITION CONTRACTORS:**

**Otto Baum Company, Inc.**  
866 N. Main  
Morton, IL 61550 309-266-7114

**CDO Trucking Inc.**  
2618 W Moss Ave  
Peoria, IL 61605 309-637-3820

**N.E. Finch Co.**  
P.O. Box 5187  
Peoria, IL 61601 309-671-1444

**Givisco Construction Company**  
2321 Lakeshore Dr.  
Pekin, IL 61554 309-620-9127

**Ironhustler Excavating, Inc.**  
PO Box 120026  
Peoria, IL 61614 309-691-9894

**Price Demolition**  
P.O. Box 120202  
Peoria, IL 61614 309-686-1313

**River City Demolition**  
P.O. Box 726  
Peoria, IL 61652 309-655-0447

**HIGHWAY AND HEAVY-SEWER CONTRACTORS:**

**Alexander Brothers Construction**  
PO Box 1508  
Peoria, IL 61601 309-673-6768

**P.A. Atherton Construction**  
57 Eichhorn Rd.  
Spring Bay, IL 61611  
309-822-8513

**Otto Baum Company**  
866 N. Main  
Morton, IL 61550 309-266-7114

**Bryne & Jones Marine LLC**  
P.O. Box 1207  
Tremont, IL 61568 309-925-2831

**R.A. Cullinan & Sons**  
P.O. Box 166, 121 W Park St.  
Tremont, IL 61568 309-676-4343

**J.C. Dillon Plumbing**  
1515 W Luthy Dr.  
Peoria, IL 61615 309-689-1596

**Freesen, Inc.**  
3151 Robbins Rd.  
Springfield, IL 62704

**ICCI - Illinois**  
420 Pinecrest Dr.  
E Peoria, IL 61611 309-694-4224

**Millennia Prof Svcs of IL**  
850 N Main St.  
Morton, IL 61550 309-699-2680

**Ordaz Construction**  
8010 N Sommer St. #A  
Peoria, IL 61615 309-693-5505

**Spurgeon Const., Inc.**  
160 N. Wilmor  
Washington, IL 61571  
309-444-9811

**Stark Excavating**  
1805 W Washington  
Bloomington, IL 61701  
309-828-5034 F 309-828-7154

**Tazewell County Asphalt**  
23497 Ridge Rd.  
E Peoria, IL 61611 309-698-8404

**R.L. Walker Excavating**  
3222 W. Farmington  
Peoria, IL 61604 309-674-6617

**SEALCOATING CONTRACTORS:**

**City Coal & Asphalt**  
PO Box 881, 225 N Second St.  
Pekin, IL 61554 309-346-0564

**R.A. Cullinan & Sons**  
P.O. Box 838 Tremont, IL 61568  
309-676-4343

**C. Lindsay Sealcoating**  
816 W Spring Hollow Lane  
Peoria, IL 61605 309-453-8162

**J Rock Pavement Maintenance**  
21220 N Route 91  
Princeville, IL 61559  
309-385-2121

**Tazewell County Asphalt**  
R.R. 5 E Peoria, IL 61611  
309-698-8404

**SMALL PAVERS CONTRACTORS:**

**Advanced Asphalt Company**  
PO Box 234 Princeton, IL 61356  
815-872-9911

**P.A. Atherton Construction**  
57 Eichhorn Rd.  
Spring Bay, IL 61611  
309-822-8513

**City Coal & Asphalt**  
PO Box 881, 225 N Second St.  
Pekin, IL 61554  
309-346-0564

**R.A. Cullinan & Sons**  
PO Box 166 121 W Park  
Tremont, IL 61568 309-676-4343

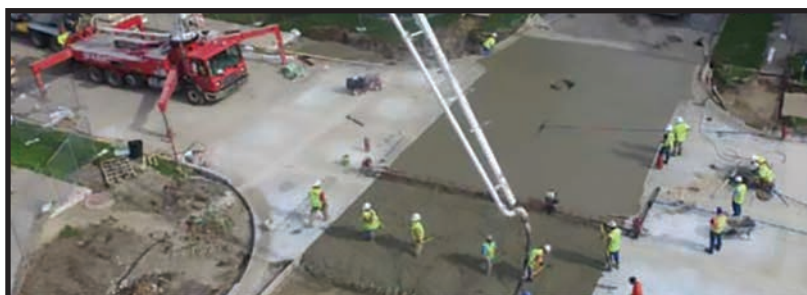
**C. Lindsay Sealcoating**  
816 W Spring Hollow Lane  
Peoria, IL 61605 309-453-8162

**Tazewell County Asphalt**  
23497 Ridge Rd.  
E Peoria, IL 61611 309-698-8404

L  
A  
B  
O  
R  
E  
R  
S  
L  
O  
C  
A  
L  
1  
6  
5

**PLUMBING CONTRACTORS:****J.C. Dillon Plumbing**1515 W Luthy Dr  
Peoria, IL 61615 309-689-1596**Dries Bros. Plumbing**5001 N. Renwood  
Peoria, IL 61614 309-691-4535**General Power Construction**901 S Bosch Rd.  
Peoria, IL 61607 309-698-4000**Illinois Piping Corp.**2323 SW Washington  
Peoria, IL 61602 309-674-6700**PIPICO Co. Ltd.**1409 W. Altorfer Dr.  
Peoria, IL 61615 309-692-4060**G.A. Rich & Sons, Inc.**P.O. Box 50 Deer Creek, IL 61733  
309-447-6231**Tobin Bros. Plumbing**2010 NE Perry Ave.  
Peoria, IL 61603 309-685-7641**LANDSCAPING CONTRACTORS:****Andrews Tree Service, Inc.**231 Justice Drive  
E Peoria, IL 61611 309-699-2599**P.A. Atherton Construction**57 Eichhorn Rd.  
Spring Bay, IL 61611  
309-822-8513**Buskirk Tree Service & Landscaping**PO Box 318, Hanna City, IL 61536  
309-565-9800**CJL Landscaping WBE**8313 Garden St.  
Kickapoo, IL 61528 309-691-9200**Central Landscaping WBE**12512 Mendell Rd.  
Princeville, IL 61559  
309-385-1770**Durdal & Sons Landscaping**1726 N Prichard Rd.  
Peoria, IL 61615 309-676-4528**D.A. Hoerr & Sons**8020 N. Shade Tree  
Peoria, IL 61614 309-691-4561**Mark Hoerr****Landscaping Inc.**9604 N Thousand Dollar Rd.  
Brimfield, IL 61517 309-303-8224**InterLock Brick Paving**P.O. Box 6  
Morton, IL 61550, 309-696-9264**Peoria Landscaping**2700 W Cedar Hills Dr.  
Dunlap, IL 61525 309-243-7761**ASBESTOS****ABATEMENT CONTRACTORS:****Brock Industrial Svcs. LLC**309 Mechanic, Pekin, IL 61554  
309-353-6145**Holian Asbestos Removal**7504 Meyer Rd.  
Spring Grove, IL 60081  
815-675-6683**Kinsale Contracting Group, Inc.**648 Blackhawk Drive  
Westmont, IL 60559  
630-325-7400 (O)**M&O Insulation Company**PO Box 759  
Homewood, IL 60430  
309-692-6700**Valor Technologies, Inc.**3 Northpoint Court  
Bolingbrook, IL 60440  
630-679-9800**ASPHALT SPRAY PATCHING****CONTRACTORS:****Ace in the Hole, Inc. WBE**830 N Lynn Street  
Washburn, IL 61570  
309-231-4556**Quality Spot Repair**483 Santa Fe Trail  
Metamora, IL 61548  
309-369-0687**MISCELLANEOUS CONTRACTORS:****Otto Baum Company, Inc.**866 N. Main  
Morton, IL 61550  
309-266-7114**Connie's Commercial****Cleaning, Co. MBE/WBE**  
4408 N Rockwood Dr. #173  
Peoria, IL 61615

309-669-7653

**Givisco Construction Co MBE**2321 Lakeshore Dr.  
Pekin, IL 61554 309-620-9127**Hohulin Brothers Fence**P.O. Box 107  
Goodfield, IL 61742  
309-965-2241**Horan Construction, Inc.**1720 W. Chanute Rd.  
Peoria, IL 61615 309-691-3133**JM Industrial Supply Inc.**2323 Lakeshore Dr.  
Pekin, IL 61554 309-346-5796**Michael Lewis Construction Maintenance Company MBE**2101 N North St.  
Peoria, IL 61604  
309-453-3393**Midwest Construction Service**2312 S.W. Adams  
Peoria, IL 61602 309-637-0077**Negwer Materials**1131 W. Detweiller Dr.  
Peoria, IL 61615 309-692-5556**Rainguard WBE**4901 S. Becker Drive  
Bartonville, IL 61607  
309-633-1383**Roadsafe Traffic****Systems, Inc.**670 High Point Lane  
East Peoria, IL 61611  
309-699-2205**Superior Labor Solutions**14 Congress Circle  
Roselle, IL 60172 630-582-9800**Westmont Interior Supply**PO Box 298  
Westmont, IL 60559 309-674-9474**Williams Speciality Svcs.**614 Wilshire  
Washington, IL 61571  
309-444-8997

*If you are looking for someone to help you navigate and be successful in selecting a contractor, you should contact GPLECET and see how we can help you.*

*Dane Simpson or Mike Matejka  
309.692.8750  
www.GreatPlainsLECET.org*